



P.O. Box 53 ▪ Wendell, ID 83355 ▪ Phone (208) 536-2002 ▪ Fax (208) 536-2380 ▪ www.rmspecialties.com

**CUSTOM MACHINED SPARK WIRE LOOMS**

**NEW PRODUCT-10.4 WIRE LOOM**

Part #	Finish	Sug. Gen. Price
--------	--------	-----------------

**Small Block Chevy w/ 10.4 Clamps**

2101-S	Satin	134.08
2101-B	Blue	139.03
2101-G	Gold	139.03
2101-K	Black	139.03
2101-L	Purple	139.03
2101-N	Green	139.03
2101-R	Red	139.03
2101-P	Polish	144.57
2101-C	Chrome	183.58

**Big Block Chevy w/ 10.4 Clamps**

2102-S	Satin	142.59
2102-B	Blue	147.54
2102-G	Gold	147.54
2102-K	Black	147.54
2102-L	Purple	147.54
2102-N	Green	147.54
2102-R	Red	147.54
2102-P	Polish	153.09
2102-C	Chrome	192.09

**Chevy Center Bolt-Down Valve Cover to fit**

**Small Block Chevrolet, 1987 & up, w/ 10.4 Clamps**

2120-S	Satin	150.15
2120-B	Blue	155.69
2120-G	Gold	155.69
2120-K	Black	155.69
2120-L	Purple	155.69
2120-N	Green	155.69
2120-R	Red	155.69
2120-P	Polish	161.90
2120-C	Chrome	199.65

Part #	Finish	Sug. Gen. Price
--------	--------	-----------------

**Small Block Chevy w/ 10.4 Clamps (-90 Vertical)**

2101-90-S	Satin	140.45
2101-90-B	Blue	145.63
2101-90-G	Gold	145.63
2101-90-K	Black	145.63
2101-90-L	Purple	145.63
2101-90-N	Green	145.63
2101-90-R	Red	145.63
2101-90-P	Polish	151.45
2101-90-C	Chrome	192.30

**Small Block Chevy w/ 10.4 Clamps (-90 Vertical)**

2102-90-S	Satin	149.36
2102-90-B	Blue	154.55
2102-90-G	Gold	154.55
2102-90-K	Black	154.55
2102-90-L	Purple	154.55
2102-90-N	Green	154.55
2102-90-R	Red	154.55
2102-90-P	Polish	160.36
2102-90-C	Chrome	201.21



P.O. Box 53 ▪ Wendell, ID 83355 ▪ Phone (208) 536-2002 ▪ Fax (208) 536-2380 ▪ www.rmspecialties.com

Prices effective 01/01/10. Prices subject to change without notice. Minimum Re-order - \$50.00. Patent #DES-298798. Patent # DES-284262.



PERFORMANCE PARTS

P.O. Box 53 ■ Wendell, ID 83355 ■ Phone (208) 536-2002 ■ Fax (208) 536-2380 ■ www.rmspecialties.com

**CUSTOM MACHINED SPARK WIRE LOOMS**

Part #	Finish	Sug. Gen. Price
<b>Chevy Straight 6 - 1099</b>		
1099-S	Satin	53.44
1099-B	Blue	64.42
1099-G	Gold	64.42
1099-K	Black	64.42
1099-L	Purple	64.42
1099-N	Green	64.42
1099-R	Red	64.42
1099-P	Polish	67.47
1099-C	Chrome	107.60
<b>GM-V6 200-229 8 13/16" Center to Center</b>		
1100-S	Satin	66.40
1100-B	Blue	78.92
1100-G	Gold	78.92
1100-K	Black	78.92
1100-L	Purple	78.92
1100-N	Green	78.92
1100-R	Red	78.92
1100-P	Polish	81.62
1100-C	Chrome	123.67
<b>Chevy Small Block</b>		
1101-S	Satin	66.40
1101-B	Blue	78.92
1101-G	Gold	78.92
1101-K	Black	78.92
1101-L	Purple	78.92
1101-N	Green	78.92
1101-R	Red	78.92
1101-P	Polish	81.62
1101-C	Chrome	123.67
<b>Chevy Big Block</b>		
1102-S	Satin	71.01
1102-B	Blue	83.76
1102-G	Gold	83.76
1102-K	Black	83.76
1102-L	Purple	83.76
1102-N	Green	83.76
1102-R	Red	83.76
1102-P	Polish	86.40
1102-C	Chrome	129.02
<b>Dodge Small Block</b>		
1103-S	Satin	66.40
1103-B	Blue	78.92
1103-G	Gold	78.92
1103-K	Black	78.92
1103-L	Purple	78.92
1103-N	Green	78.92
1103-R	Red	78.92
1103-P	Polish	81.62
1103-C	Chrome	123.67
<b>Dodge Big Block</b>		
1104-S	Satin	71.01
1104-B	Blue	83.76
1104-G	Gold	83.76
1104-K	Black	83.76
1104-L	Purple	83.76
1104-N	Green	83.76
1104-R	Red	83.76
1104-P	Polish	86.40
1104-C	Chrome	129.02
<b>Ford 289-302-351 Windsor</b>		
1105-S	Satin	66.40
1105-B	Blue	78.92
1105-G	Gold	78.92
1105-K	Black	78.92
1105-L	Purple	78.92
1105-N	Green	78.92
1105-R	Red	78.92
1105-P	Polish	81.62
1105-C	Chrome	123.67

Part #	Finish	Sug. Gen. Price
<b>Chevy Straight 6 - 1099 (-90 Vertical)</b>		
1099-90-S	Satin	55.96
1099-90-B	Blue	67.49
1099-90-G	Gold	67.49
1099-90-K	Black	67.49
1099-90-L	Purple	67.49
1099-90-N	Green	67.49
1099-90-R	Red	67.49
1099-90-P	Polish	70.70
1099-90-C	Chrome	112.04
<b>GM-V6 200-229 8 13/16" Center to Center (-90 Vertical)</b>		
1100-90-S	Satin	69.57
1100-90-B	Blue	82.71
1100-90-G	Gold	82.71
1100-90-K	Black	82.71
1100-90-L	Purple	82.71
1100-90-N	Green	82.71
1100-90-R	Red	82.71
1100-90-P	Polish	85.55
1100-90-C	Chrome	128.91
<b>Chevy Small Block (-90 Vertical)</b>		
1101-90-S	Satin	69.57
1101-90-B	Blue	82.71
1101-90-G	Gold	82.71
1101-90-K	Black	82.71
1101-90-L	Purple	82.71
1101-90-N	Green	82.71
1101-90-R	Red	82.71
1101-90-P	Polish	85.55
1101-90-C	Chrome	128.91
<b>Chevy Big Block (-90 Vertical)</b>		
1102-90-S	Satin	74.42
1102-90-B	Blue	87.79
1102-90-G	Gold	87.79
1102-90-K	Black	87.79
1102-90-L	Purple	87.79
1102-90-N	Green	87.79
1102-90-R	Red	87.79
1102-90-P	Polish	90.57
1102-90-C	Chrome	134.53
<b>Dodge Small Block (-90 Vertical)</b>		
1103-90-S	Satin	69.57
1103-90-B	Blue	82.71
1103-90-G	Gold	82.71
1103-90-K	Black	82.71
1103-90-L	Purple	82.71
1103-90-N	Green	82.71
1103-90-R	Red	82.71
1103-90-P	Polish	85.55
1103-90-C	Chrome	128.91
<b>Dodge Big Block (-90 Vertical)</b>		
1104-90-S	Satin	74.42
1104-90-B	Blue	87.79
1104-90-G	Gold	87.79
1104-90-K	Black	87.79
1104-90-L	Purple	87.79
1104-90-N	Green	87.79
1104-90-R	Red	87.79
1104-90-P	Polish	90.57
1104-90-C	Chrome	134.53
<b>Ford 289-302-351 Windsor (-90 Vertical)</b>		
1105-90-S	Satin	69.57
1105-90-B	Blue	82.71
1105-90-G	Gold	82.71
1105-90-K	Black	82.71
1105-90-L	Purple	82.71
1105-90-N	Green	82.71
1105-90-R	Red	82.71
1105-90-P	Polish	85.55
1105-90-C	Chrome	128.91

www.rmspecialties.com

# CUSTOM MACHINED

Part #	Finish	Sug. Gen. Price
<b>Ford 351 Cleveland-Boss 302</b>		
1106-S	Satin	71.01
1106-B	Blue	83.76
1106-G	Gold	83.76
1106-K	Black	83.76
1106-L	Purple	83.76
1106-N	Green	83.76
1106-R	Red	83.76
1106-P	Polish	86.40
1106-C	Chrome	129.02

### Chevy Big Block (under header)

1107-S	Satin	77.89
1107-B	Blue	91.01
1107-G	Gold	91.01
1107-K	Black	91.01
1107-L	Purple	91.01
1107-N	Green	91.01
1107-R	Red	91.01
1107-P	Polish	93.43
1107-C	Chrome	137.12

### Ford 429-460

1108-S	Satin	71.01
1108-B	Blue	83.76
1108-G	Gold	83.76
1108-K	Black	83.76
1108-L	Purple	83.76
1108-N	Green	83.76
1108-R	Red	83.76
1108-P	Polish	86.40
1108-C	Chrome	129.02

### Ford 360-390-428

1109-S	Satin	66.40
1109-B	Blue	78.92
1109-G	Gold	78.92
1109-K	Black	78.92
1109-L	Purple	78.92
1109-N	Green	78.92
1109-R	Red	78.92
1109-P	Polish	81.62
1109-C	Chrome	123.67

### Pontiac

1110-S	Satin	71.01
1110-B	Blue	83.76
1110-G	Gold	83.76
1110-K	Black	83.76
1110-L	Purple	83.76
1110-N	Green	83.76
1110-R	Red	83.76
1110-P	Polish	86.40
1110-C	Chrome	129.02

### GM-V6 196-231 8 3/8" Center to Center

1111-S	Satin	66.40
1111-B	Blue	78.92
1111-G	Gold	78.92
1111-K	Black	78.92
1111-L	Purple	78.92
1111-N	Green	78.92
1111-R	Red	78.92
1111-P	Polish	81.62
1111-C	Chrome	123.67

### Olds (1959-64)

1112-S	Satin	71.01
1112-B	Blue	83.76
1112-G	Gold	83.76
1112-K	Black	83.76
1112-L	Purple	83.76
1112-N	Green	83.76
1112-R	Red	83.76
1112-P	Polish	86.40
1112-C	Chrome	129.02

Part #	Finish	Sug. Gen. Price
--------	--------	-----------------

### Ford 351 Cleveland-Boss 302 (-90 Vertical)

1106-90-S	Satin	74.42
1106-90-B	Blue	87.79
1106-90-G	Gold	87.79
1106-90-K	Black	87.79
1106-90-L	Purple	87.79
1106-90-N	Green	87.79
1106-90-R	Red	87.79
1106-90-P	Polish	90.57
1106-90-C	Chrome	134.53

Not Available in Vertical Style

### Ford 429-460 (-90 Vertical)

1108-90-S	Satin	74.42
1108-90-B	Blue	87.79
1108-90-G	Gold	87.79
1108-90-K	Black	87.79
1108-90-L	Purple	87.79
1108-90-N	Green	87.79
1108-90-R	Red	87.79
1108-90-P	Polish	90.57
1108-90-C	Chrome	134.53

### Ford 360-390-428 (-90 Vertical)

1109-90-S	Satin	69.57
1109-90-B	Blue	82.71
1109-90-G	Gold	82.71
1109-90-K	Black	82.71
1109-90-L	Purple	82.71
1109-90-N	Green	82.71
1109-90-R	Red	82.71
1109-90-P	Polish	85.55
1109-90-C	Chrome	128.91

### Pontiac (-90 Vertical)

1110-90-S	Satin	74.42
1110-90-B	Blue	87.79
1110-90-G	Gold	87.79
1110-90-K	Black	87.79
1110-90-L	Purple	87.79
1110-90-N	Green	87.79
1110-90-R	Red	87.79
1110-90-P	Polish	90.57
1110-90-C	Chrome	134.53

### GM-V6 196-231 8 3/8" Center to Center (-90 Vertical)

1111-90-S	Satin	69.57
1111-90-B	Blue	82.71
1111-90-G	Gold	82.71
1111-90-K	Black	82.71
1111-90-L	Purple	82.71
1111-90-N	Green	82.71
1111-90-R	Red	82.71
1111-90-P	Polish	85.55
1111-90-C	Chrome	128.91

### Olds (1959-64) (-90 Vertical)

1112-90-S	Satin	74.42
1112-90-B	Blue	87.79
1112-90-G	Gold	87.79
1112-90-K	Black	87.79
1112-90-L	Purple	87.79
1112-90-N	Green	87.79
1112-90-R	Red	87.79
1112-90-P	Polish	90.57
1112-90-C	Chrome	134.53

# SPARK WIRE LOOMS

Part #	Finish	Sug. Gen. Price
<b>Olds (1965 &amp; up)</b>		
1113-S	Satin	71.01
1113-B	Blue	83.76
1113-G	Gold	83.76
1113-K	Black	83.76
1113-L	Purple	83.76
1113-N	Green	83.76
1113-R	Red	83.76
1113-P	Polish	86.40
1113-C	Chrome	129.02

## AMC

1114-S	Satin	71.01
1114-B	Blue	83.76
1114-G	Gold	83.76
1114-K	Black	83.76
1114-L	Purple	83.76
1114-N	Green	83.76
1114-R	Red	83.76
1114-P	Polish	86.40
1114-C	Chrome	129.02

## Toyota

1117-S	Satin	53.44
1117-B	Blue	64.42
1117-G	Gold	64.42
1117-K	Black	64.42
1117-L	Purple	64.42
1117-N	Green	64.42
1117-R	Red	64.42
1117-P	Polish	67.47
1117-C	Chrome	102.94

## Small Block Chevy with Sanderson type Headers

SAN 1-S	Satin	71.01
SAN 1-B	Blue	83.76
SAN 1-G	Gold	83.76
SAN 1-K	Black	83.76
SAN 1-L	Purple	83.76
SAN 1-N	Green	83.76
SAN 1-R	Red	83.76
SAN 1-P	Polish	86.40
SAN 1-C	Chrome	129.02

## Small Block Chevy w/ Air Conditioner Compressor (Does not have a #1 Clamp)

AIR 1-S	Satin	71.01
AIR 1-B	Blue	83.76
AIR 1-G	Gold	83.76
AIR 1-K	Black	83.76
AIR 1-L	Purple	83.76
AIR 1-N	Green	83.76
AIR 1-R	Red	83.76
AIR 1-P	Polish	86.40
AIR 1-C	Chrome	129.02

Part #	Finish	Sug. Gen. Price
<b>Olds (1965 &amp; up) (-90 Vertical)</b>		
1113-90-S	Satin	74.42
1113-90-B	Blue	87.79
1113-90-G	Gold	87.79
1113-90-K	Black	87.79
1113-90-L	Purple	87.79
1113-90-N	Green	87.79
1113-90-R	Red	87.79
1113-90-P	Polish	90.57
1113-90-C	Chrome	134.53

## AMC (-90 Vertical)

1114-90-S	Satin	74.42
1114-90-B	Blue	87.79
1114-90-G	Gold	87.79
1114-90-K	Black	87.79
1114-90-L	Purple	87.79
1114-90-N	Green	87.79
1114-90-R	Red	87.79
1114-90-P	Polish	90.57
1114-90-C	Chrome	134.53

## Toyota (-90 Vertical)

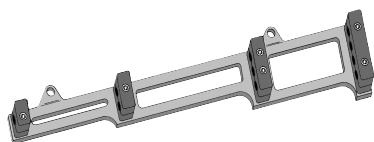
1117-90-S	Satin	55.96
1117-90-B	Blue	67.49
1117-90-G	Gold	67.49
1117-90-K	Black	67.49
1117-90-L	Purple	67.49
1117-90-N	Green	67.49
1117-90-R	Red	67.49
1117-90-P	Polish	70.70
1117-90-C	Chrome	107.14

## Small Block Chevy with Sanderson type Headers (-90 Vertical)

SAN 1-90-S	Satin	69.57
SAN 1-90-B	Blue	82.71
SAN 1-90-G	Gold	82.71
SAN 1-90-K	Black	82.71
SAN 1-90-L	Purple	82.71
SAN 1-90-N	Green	82.71
SAN 1-90-R	Red	82.71
SAN 1-90-P	Polish	85.55
SAN 1-90-C	Chrome	128.91

## Small Block Chevy w/ Air Conditioner Compressor (Does not have a #1 Clamp) (-90 Vertical)

AIR 1-90-S	Satin	74.42
AIR 1-90-B	Blue	87.79
AIR 1-90-G	Gold	87.79
AIR 1-90-K	Black	87.79
AIR 1-90-L	Purple	87.79
AIR 1-90-N	Green	87.79
AIR 1-90-R	Red	87.79
AIR 1-90-P	Polish	90.57
AIR 1-90-C	Chrome	134.53



Prices, product photos, cool stuff and More! Visit us at

**[www.rmsspecialties.com](http://www.rmsspecialties.com)**

## CUSTOM MACHINED SPARK WIRE LOOMS

Part #	Finish	Sug. Gen. Price
<b>To fit Chevy Center Bolt-Down Valve Cover Small Block</b>		
1120-S	Satin	75.47
1120-B	Blue	88.37
1120-G	Gold	88.37
1120-K	Black	88.37
1120-L	Purple	88.37
1120-N	Green	88.37
1120-R	Red	88.37
1120-P	Polish	90.79
1120-C	Chrome	139.90

**To fit Chevy Center Bolt-Down Cover Small Small Block Chevrolet, 1987 & up, R&M Logo**

1121-S	Satin	75.47
1121-B	Blue	88.37
1121-G	Gold	88.37
1121-K	Black	88.37
1121-L	Purple	88.37
1121-N	Green	88.37
1121-R	Red	88.37
1121-P	Polish	90.79
1121-C	Chrome	139.90

**To fit Center Bolt-Down GM V-6, 1987 & up - Satin**

1122-S	Satin	71.01
1122-B	Blue	83.76
1122-G	Gold	83.76
1122-K	Black	83.76
1122-L	Purple	83.76
1122-N	Green	83.76
1122-R	Red	83.76
1122-P	Polish	86.40
1122-C	Chrome	129.02



## INJECTION MOLDED HEAT-RESISTANT GLASS-FILLED POLYESTER

Part #	Finish	Sug. Gen. Price
A-200		20.47
U-300		61.93
JC08-Y	Yellow	50.77
JC08-R	Red	50.77
JC08-B	Blue	50.77
JC08-K	Black	45.79

Accessory 4-hole Plug Wire Clamp - Black Only

Universal Spark Plug Wire Loom - Black Only

Complete set of Clamps

Complete set of Clamps

Complete set of Clamps

Complete set of Clamps

## QUIK-RELEASE VALVE COVER™

Part #	Finish	Sug. Gen. Price
R-400		1,995.00

Quik-Release Valve Cover Big Block Chevy Only



**SPECIALTIES**  
PERFORMANCE PARTS

P.O. Box 53 ▪ Wendell, ID 83355 ▪ Phone (208) 536-2002 ▪ Fax (208) 536-2380 ▪ [www.rmspecialties.com](http://www.rmspecialties.com)

Prices effective 1/1/10. Prices subject to change without notice. Minimum Re-order - \$50.00. Patent #DES-298798. Patent # DES-284262.